



Silicon  
Carbide  
**Crucibles**  
Platinum Brand Crucibles

Clay  
Graphite  
**Century Crucibles**  
Isostatic Advance Technology



FOR INDIAN MARKET



**Zircar Refractories Ltd.**  
Formerly Zircar Crucibles Private Limited

PRODUCT WITH A CUTTING EDGE

### A-Shape Crucibles (Small)

For Over Lift Out and Bale Out Furnaces

Size	Height (mm)	Outside Dia		Brimful Capacity (Ltr.)	Brass working Capacity Approx. (kgs.)
		Top (mm)	Bottom (mm)		
AC-16	232	195	140	3.75	29.15
AC-16.5	240	195	140	3.90	30.25
AC-17	255	195	140	4.20	32.75
AC-18	240	210	140	4.30	34.00
AC-19	250	210	140	4.50	35.50
AC-19.5	260	227	150	5.45	41.75
AC-20	270	227	150	5.75	44.00
AC-25	285	227	150	6.15	48.43
AC-27	290	227	150	6.30	48.00
AC-30	290	255	150	7.65	59.00
AC-33	310	265	180	8.60	65.25
AC-34	312	274	180	9.30	69.00
AC-34.5	330	265	180	9.30	71.00
AC-35	327	274	180	9.90	72.75
AC-35.5	340	265	180	9.70	73.25
AC-38	355	265	180	10.20	76.50

### A-Shape Crucibles (Small)

For Over Lift Out and Bale Out Furnaces

Size	Height (mm)	Outside Dia		Brimful Capacity (Ltr.)	Brass working Capacity Approx. (kgs.)
		Top (mm)	Bottom (mm)		
AC-40	340	275	180	10.30	76.75
AC-45	362	275	180	11.25	82.75
AC-48	345	285	190	11.00	83.50
AC-50	340	294	195	11.20	86.50
AC-52	360	294	195	12.10	90.50
AC-60	375	294	195	12.70	100.01
AC-70	402	294	195	13.90	102.50
AC-72	375	305	200	14.30	112.61
AC-75	385	325	205	16.75	128.00
AC-80	400	325	205	17.60	134.00
AC-86	420	325	205	18.70	147.26
AC-90	425	325	205	19.00	143.75
AC-95	410	345	235	20.25	153.50
AC-98	425	345	235	21.10	161.50
AC-100	418	355	205	20.90	162.00

#### Note

1. Dimensions shown are nominal and subject to manufacturing tolerances.
2. Our Crucibles are Tailor-made for Ferrous and Nonferrous applications. Please mention the name of metal and type of furnace in order to serve you better.
3. Working Capacities are approximate and calculated on Brass Sp. Gr. of 8.75 and Aluminium Sp. Gr. of 2.7 having 90% of Brimful Capacity.
4. Accessories like Stands, Muffle Rings and Covers also available.

## A-Shape Crucibles (Big)

For Over Lift Out and Bale Out Furnaces

Size	Height (mm)	Outside Dia		Brimful Capacity (Ltr.)	Brass working Capacity Approx. (kgs.)
		Top (mm)	Bottom (mm)		
AC-120	452	356	205	23.15	182
AC-125	425	381	210	24.00	189
AC-130	450	382	210	26.00	205
AC-140	475	383	210	28.00	221
AC-150	488	384	210	29.00	228
AC-170	505	385	210	30.25	238
AC-170 P	505	385	210	27.50	217
AC-180	520	385	210	31.50	248
AC-185	535	385	210	32.75	258
AC-190	500	413	225	33.00	260
AC-195	525	414	225	35.25	278
AC-200	510	442	225	38.25	301
AC-201	545	400	285	36.50	287
AC-210	610	385	210	38.00	299
AC-215	550	415	225	37.75	297
AC-225	520	443	225	39.50	311
AC-230	540	443	225	41.70	328
AC-240	600	417	225	41.90	330
AC-250	560	444	225	43.90	346
AC-254	600	445	225	47.35	373
AC-255	615	445	225	49.75	392
AC-280	650	445	225	53.00	417
AC-300	490	511	300	52.00	410
AC-325	590	482	280	58.90	464
AC-350	615	483	280	63.30	498
AC-350 T	615	483	280	62.00	488
AC-350 TT	615	483	280	61.40	484
AC-351 P	615	483	280	53.00	417
AC-353	600	513	300	67.00	528
AC-354 P	645	484	280	56.80	447

## A-Shape Crucibles (Big)

For Over Lift Out and Bale Out Furnaces

Size	Height (mm)	Outside Dia		Brimful Capacity (Ltr.)	Brass working Capacity Approx. (kgs.)
		Top (mm)	Bottom (mm)		
AC-355	670	484	280	70.56	552
AC-355 T	670	484	280	69.50	547
AC-355 TT	670	484	280	68.40	539
AC-356 P	670	484	280	60.00	473
AC-375	705	485	280	73.00	575
AC-380	650	515	300	74.40	586
AC-400	665	540	300	87.70	691
AC-400 T	665	540	300	85.25	671
AC-404	680	540	300	82.25	648
AC-404 H	710	540	300	87.20	687
AC-405	660	580	345	97.25	766
AC-425	683	540	300	90.25	711
AC-500	715	541	300	94.25	742
AC-510	705	581	345	105.75	833
AC-550	730	542	300	96.90	763
AC-550 P	730	542	300	88.00	693
AC-555	730	582	345	110.50	870
AC-600	770	542	300	103.00	811
AC-610	765	582	345	116.00	914
AC-675	800	583	345	122.75	967
AC-675 H	815	583	345	123.50	973
AC-710	835	584	345	127.00	1000
AC-710 H	850	584	345	130.00	1024
AC-750	900	584	345	138.50	1091
AC-800	815	543	300	110.00	866
AC-1000	825	624	355	150.00	1181
AC-1200	880	624	355	160.00	1260
AC-1500	900	780	355	255.00	2008
AC-1800	1030	780	355	299.00	2355

### Basin-Shape Crucibles

For Bale Out Furnaces

Size	Comparative Size	Height (mm)	Outside Dia		Brimful Capacity (Ltr.)	Aluminium working Capacity Approx. (kgs.)
			Top (mm)	Bottom (mm)		
BUC-35	BC-173	345	402	225	20.50	50
BUC-50	BC-174	395	406	225	24.50	60
BUC-60	BC-176	435	409	225	27.80	67
BUC-75	BC-164	375	473	280	33.50	81
BUC-76	-	380	528	300	40.00	97
BUC-77	-	425	530	300	47.50	115
BUC-100	BC-166	410	529	300	47.80	116
BUC-125	BC-167	450	530	300	54.00	131
BUC-126	-	450	530	300	52.00	126
BUC-127	-	488	531	300	58.50	142
BUC-130	-	450	570	345	61.50	149
BUC-150	BC-168	500	532	300	62.30	151
BUC-175	BC-169	550	534	300	70.00	170
BUC-200	BC-171	607	537	300	79.50	193
BUC-210	BC-177	620	538	300	81.00	197
BUC-215	BC-202	500	615	355	81.00	197
BUC-250	BC-302	640	616	355	108.00	262
BUC-300	BC-401	710	618	355	123.80	301
BUC-310	-	590	720	380	151.00	367
BUC-350	BC-402	810	624	355	146.50	356
BUC-375	-	850	624	355	153.80	374
BUC-386	-	685	720	380	160.00	389
BUC-400	BC-502	900	625	355	164.00	399
BUC-422	-	735	720	380	175.50	426
BUC-450	BC-724	800	720	380	192.50	468
BUC-500 SH	-	555	773	355	130.50	317
BUC-500	BC-247	755	777	355	203.00	493

### Basin-Shape Crucibles

For Bale Out Furnaces

Size	Comparative Size	Height (mm)	Outside Dia		Brimful Capacity (Ltr.)	Aluminium working Capacity Approx. (kgs.)
			Top (mm)	Bottom (mm)		
BUC-500 E	-	755	777	355	208.00	505
BUC-501	-	755	775	460	211.40	514
BUC-550	-	830	778	355	223.50	543
BUC-575	BC-719	950	720	380	238.50	580
BUC-600	BC-263	905	780	355	258.00	627
BUC-601	-	900	777	460	266.40	647
BUC-650	BC-263	1000	780	355	289.00	702
BUC-700	BC-264	1035	780	355	302.00	734
BUC-725	-	850	882	380	280.50	682
BUC-750	-	880	882	380	295.00	717
BUC-750 B	-	880	947	400	343.00	833
BUC-800	-	1000	884	380	350.50	852
BUC-800 E	-	1000	884	380	379.00	921
BUC-800 B	-	1000	951	400	405.50	985
BUC-900	-	1100	885	380	394.50	959
BUC-900 B	-	1100	952	400	458.50	1114
BUC-1000 E	-	1150	885	380	417.50	1014
BUC-1000	-	1170	885	380	427.00	1038
BUC-1000 B	-	1170	954	400	498.00	1210
BUC-1100	-	1250	885	380	463.50	1126
BUC-1300 B	-	1250	955	400	543.00	1319
BUC-1350 B	-	1350	955	400	596.50	1449
BUC-700 U	-	560	866	380	155.00	377
BUC-800 U	-	605	870	380	174.00	423
BUC-900 U	-	650	875	380	195.00	474
BUC-1000 U	-	710	878	380	219.00	532
BUC-1025 U	-	750	880	380	238.00	578

### TPC Crucibles (Without Spout)

For Overtop Crucibles for Tilting Furnaces

Size	Height (mm)	Outside Dia		Brimful Capacity (Ltr.)	Brass working Capacity Approx. (kgs.)
		Top (mm)	Bottom (mm)		
TPC-901	760	295	195	28.50	224
TPC-389	690	346	235	36.50	287
TPC-904	915	347	235	49.50	390
TPC-5	680	421	225	48.50	382
TPC-6	680	445	225	56.00	441

### TPC Crucibles (Without Spout)

For Overtop Crucibles for Tilting Furnaces

Size	Height (mm)	Outside Dia		Brimful Capacity (Ltr.)	Brass working Capacity Approx. (kgs.)
		Top (mm)	Bottom (mm)		
TPC-8	810	453	280	70.00	551
TPC-10	950	456	280	85.00	669
TPC-14	1015	456	280	92.00	725
TPC-15	980	545	300	132.00	1040
TPC-830	1190	546	300	166.00	1307

### TPC Crucibles (With Spout) For Tilting Furnaces

Size	Height (mm)	Outside Dia		Brimful Capacity (Ltr.)	Brass working Capacity Approx. (kgs.)
		Top (mm)	Bottom (mm)		
TPC-254	430	265	180	11.00	87
TPC-173	490	295	195	15.00	118
TPC-722	565	326	205	23.80	187
TPC-95	410	345	235	17.50	138
TPC-184	590	356	205	28.50	224
TPC-175 LS	475	383	210	24.00	189
TPC-400 S	615	346	235	29.00	228
TPC-400	610	385	210	34.00	268
TPC-723	640	385	210	36.30	285
TPC-196	780	386	210	47.30	372
TPC-575	665	540	300	79.20	624
TPC-600	810	386	210	49.80	392
TPC-843 S	680	421	225	44.00	347
TPC-843	680	445	225	50.50	398
TPC-274	720	452	280	55.50	437
TPC-982	810	453	280	64.50	508
TPC-12	950	456	280	79.50	626
TPC-12 S	845	453	280	68.00	535
TPC-89 S	740	542	300	90.00	709
TPC-13	815	543	300	102.00	803
TPC-89	800	583	345	113.50	894
TPC-89 H	900	584	345	129.00	1016
TPC-16	980	545	300	124.00	977

### TPC Crucibles (Spouted Basin) For Tilting Furnaces

Size	Height (mm)	Outside Dia		Brimful Capacity (Ltr.)	Aluminium working Capacity Approx. (kgs.)
		Top (mm)	Bottom (mm)		
TPC-287	607	537	300	71.00	173
TPC-387	640	616	355	97.00	236
TPC-412	810	624	355	135.00	328
TPC-413	825	624	355	139.00	337
TPC-412 H	900	625	355	153.00	371
TPC-587	905	780	355	240.00	582
TPC-588	900	777	460	247.40	600
TPC-587 H	1000	780	355	270.00	656
TPC-650	1035	780	355	283.00	688
TPC-700	1100	784	355	307.00	746
TPC-750	880	882	380	270.50	657
TPC-800	1000	884	380	326.00	792
TPC-800 B	1000	951	400	378.00	919
TPC-900 B	1100	952	400	431.00	1047
TPC-1000 E	1150	885	380	393.50	956
TPC-1000	1170	885	380	403.00	979
TPC-1025 U	750	880	380	213.50	519
TPC-1100	1250	885	380	440.00	1069

### Cylindrical Crucibles For Induction Furnaces

Size	Comparative Size	Height (mm)	Outside Dia		Brimful Capacity (Ltr.)	Brass working Capacity Approx. (kgs.)
			Top (mm)	Bottom (mm)		
CC-1780	-	170	100	100	0.65	5
CC-1114	-	190	110	110	0.95	7
CC-323	EC323	320	165	165	4.00	32
CC-175	EA323	310	175	175	4.50	35
CC-1606	EC1606	315	225	225	7.00	55
CC-1601	EC1606	470	225	225	10.50	83
CC-444	EC444	475	255	255	14.00	110
CC-427	-	400	270	270	13.00	102
CC-552	EC552	450	295	295	17.50	138
CC-325	EC325	330	330	330	16.50	130
CC-329	EC329	530	330	330	27.25	215
CC-330	EC330	635	330	330	32.25	254
CC-360	CY-359660	660	360	360	41.25	325
CC-86	CYI-86	450	390	390	32.75	258
CC-170	-	225	175	175	3.50	28
CC-210	-	260	390	390	20.50	161
CC-180	CY-390540	540	390	390	40.00	315
CC-181	CY-390630	630	390	390	46.25	364
CC-390	CY-390660	660	390	390	48.75	384
CC-70	EC70	670	450	450	64.75	510
CC-71	EC71	700	450	450	68.00	536
CC-75	EC75	800	450	450	77.00	606
CC-602X730	-	730	650	602	-	-
CC-800	-	1100	805	800	403.00	3173

### BCC Shape Crucibles

Size	Height (mm)	Outside Dia		Brimful Capacity (Ltr.)	Aluminium working Capacity Approx. (kgs.)
		Top (mm)	Bottom (mm)		
BCC-725	850	850	450	296.00	719
BCC-750	880	850	450	309.00	751
BCC-800	1000	852	450	360.00	875
BCC-900	1100	853	450	397.00	965
BCC-950	1140	854	450	423.00	1028
BCC-1000	1170	854	450	427.00	1038
BCC-1100	1250	855	450	459.00	1115
BCC-900 U	650	847	450	218.00	530
BCC-1000 U	710	848	450	240.00	583
BCC-1025 U	750	848	450	258.00	627

#### Note

- Dimensions shown are nominal and subject to manufacturing tolerances.
- Our Crucibles are Tailor-made for Ferrous and Nonferrous applications. Please mention the name of metal and type of furnace in order to serve you better.
- Working Capacities are approximate and calculated on Brass Sp. Gr. of 8.75 and Aluminium Sp. Gr. of 2.7 having 90% of Brimful Capacity.
- Accessories like Stands, Muffle Rings and Covers also available.

### Al Shape Crucibles (Small)

Size	Height (mm)	Outside Dia		Brimful Capacity (Ltr.)
		Top (mm)	Bottom (mm)	
Al-0/04	57	52	40	0.05
Al-0/07	66	60	45	0.07
Al-0/16	80	76	50	0.17
Al-0/2	90	90	55	0.25
Al-1	95	92	65	0.28
Al-2	120	110	75	0.55
Al-3	135	120	80	0.75
Al-4	155	140	100	1.25
Al-4.1	140	115	75	0.70
Al-5	165	140	100	1.35
Al-5.1	150	125	85	0.90
Al-6	175	140	100	1.45
Al-8	180	155	105	1.75
Al-10	200	176	120	2.35
Al-12	210	176	120	2.50
Al-14	225	176	120	2.75
Al-15	245	176	120	3.05
Al-16	230	200	120	3.85
Al-16 L	240	212	130	4.15
Al-18	255	216	130	4.50
Al-18 L	280	216	130	5.15
Al-20	265	230	140	5.50

### Al Shape Crucibles (Small)

Size	Height (mm)	Outside Dia		Brimful Capacity (Ltr.)
		Top (mm)	Bottom (mm)	
Al-20 P	267	235	156	5.65
Al-25	280	230	140	6.00
Al-30.1	290	230	150	5.75
Al-30	280	255	165	7.50
Al-32	340	245	175	7.75
Al-32 S	325	245	175	7.25
Al-34	360	245	175	8.50
Al-35	300	268	185	8.50
Al-40	315	268	185	9.00
Al-41	330	268	185	9.50
Al-42	350	268	185	10.50
Al-50	340	290	195	11.25
Al-55	360	290	195	12.00
Al-60	375	290	195	12.75
Al-65	395	290	195	13.75
Al-70	385	325	210	14.25
Al-80	410	325	210	15.50
Al-85	430	325	210	16.50
Al-90	405	350	240	21.00
Al-100	410	350	240	21.25
Al-110	420	350	240	22.00
Al-120	435	350	240	22.75

We make both type of Isostatic Crucibles in all sizes under two different series.

Shape	Isostatic Clay- Graphite Crucibles	Isostatic SiC Crucibles
A	AI	ACI
B	BPI	BPCI
C	CI	CCI
TP	TPI	TPCI



AI Shape Crucibles (Big)

Size	Comparative Size	Height (mm)	Outside Dia		Brimful Capacity (Ltr.)
			Top (mm)	Bottom (mm)	
AI-125	-	425	385	240	23.50
AI-130	AI-135	450	385	240	25.50
AI-135 T	-	450	410	240	26.00
AI-140	AI-150	475	385	240	28.00
AI-150	AI-151	485	385	240	29.00
AI-150 T	-	485	410	240	28.50
AI-170	AI-180	505	385	240	30.00
AI-180	AI-180 L	520	385	240	31.00
AI-185	-	535	385	240	32.75
AI-195	-	550	385	240	34.25
AI-210	-	610	385	240	38.75
AI-200	-	510	445	225	39.00
AI-225	-	520	445	225	40.00
AI-230	-	540	445	225	42.00
AI-250	-	560	445	225	44.00
AI-255	-	615	445	225	50.00
AI-280	-	650	445	225	54.00
AI-325	AI-326	590	485	280	60.00
AI-350	-	615	485	280	63.25
AI-355	AI-351.2	670	485	280	70.00
AI-360	AI-355	600	565	350	85.00
AI-361	-	600	545	300	69.80

AI Shape Crucibles (Big)

Size	Comparative Size	Height (mm)	Outside Dia		Brimful Capacity (Ltr.)
			Top (mm)	Bottom (mm)	
AI-375	AI-352	705	485	280	74.50
AI-400	-	660	565	350	96.00
AI-401	-	660	545	300	80.00
AI-405	-	660	584	345	96.00
AI-411	AI-405	680	545	300	83.50
AI-450	-	705	565	350	105.00
AI-451	AI-405 L	705	545	300	87.90
AI-500	-	720	565	350	107.00
AI-501	-	720	545	300	90.50
AI-510	-	705	584	345	105.50
AI-530	AI-525	740	565	350	111.00
AI-550	-	760	565	350	115.00
AI-551	-	760	545	300	97.50
AI-555	-	730	584	345	109.50
AI-600	-	810	565	350	124.50
AI-601	-	810	545	300	106.30
AI-610	-	765	584	345	115.50
AI-675	-	800	584	345	122.00
AI-675 H	-	815	584	345	125.50
AI-710	-	835	584	345	128.50
AI-850	AI-605	850	565	350	131.00
AI-710 H	-	860	584	345	133.50
AI-900	-	900	584	345	139.00

We make both type of Isostatic Crucibles in all sizes under two different series.

Shape	Isostatic Clay- Graphite Crucibles	Isostatic SiC Crucibles
A	AI	ACI
B	BPI	BPCI
C	CI	CCI
TP	TPI	TPCI

### BPI Shape Crucibles

Size	Height (mm)	Outside Dia		Brimful Capacity (Ltr.)
		Top (mm)	Bottom (mm)	
BPI-215	500	626	250	82.00
BPI-250	640	626	250	115.00
BPI-300	710	626	250	131.00
BPI-350	810	626	250	155.00
BPI-375	850	626	250	164.00
BPI-400	900	626	250	175.00
BPI-500	750	785	310	216.00
BPI-550	825	785	310	246.00
BPI-600	890	785	310	270.00
BPI-650	950	785	310	293.00
BPI-700	1000	785	310	312.00
BPI-725	850	885	360	323.00
BPI-750	880	885	360	338.00
BPI-800	1000	885	360	397.00
BPI-900	1100	885	360	447.00
BPI-1000	1150	885	360	472.00
BPI-1100	1180	885	360	487.00
BPI-550 U	550	885	360	174.00
BPI-800 U	605	885	360	201.00
BPI-900 U	650	885	360	223.00
BPI-1000 U	710	885	360	253.00
BPI-1025 U	750	885	360	273.00
BPI-550 B	550	960	400	193.00
BPI-750 B	880	960	400	384.00
BPI-800 B	1000	960	400	452.00
BPI-900 B	1100	960	400	510.00
BPI-1000 B	1170	960	400	551.00
BPI-1300 B	1250	960	400	598.00
BPI-1350 B	1350	960	400	655.00

### BUI Shape Crucibles

Size	Height (mm)	Outside Dia		Brimful Capacity (Ltr.)
		Top (mm)	Bottom (mm)	
BUI-215	500	616	355	96.50
BUI-250	640	622	355	120.50
BUI-300	710	625	355	132.00
BUI-350	810	630	355	148.25
BUI-375	850	630	355	155.50
BUI-400	900	630	355	171.50
BUI-700	1000	782	445	320.00
BUI-600	890	782	445	277.50
BUI-550	825	782	445	252.50
BUI-500	750	782	445	224.00

#### Note

1. Dimensions shown are nominal and subject to manufacturing tolerances.
2. Our Crucibles are Tailor-made for Ferrous and Nonferrous applications. Please mention the name of metal and type of furnace in order to serve you better.
3. Working Capacities are approximate and calculated on Brass Sp. Gr. of 8.75 and Aluminium Sp. Gr. of 2.7 having 90% of Brimful Capacity.
4. Accessories like Stands, Muffle Rings and Covers also available.

We make both type of Isostatic Crucibles in all sizes under two different series.

Shape	Isostatic Clay- Graphite Crucibles	Isostatic SiC Crucibles
A	AI	ACI
B	BPI	BPCI
C	CI	CCI
TP	TPI	TPCI



### TPI Shape Crucibles (Spouted)

Size	Height (mm)	Outside Dia		Brimful Capacity (Ltr.)
		Top (mm)	Bottom (mm)	
TPI-32	330	245	175	7.85
TPI-88	810	545	300	97.50
TPI-89	810	565	350	115.00
TPI-250	640	626	250	102.00
TPI-350	810	626	250	144.00
TPI-387	640	626	250	102.00
TPI-412	810	626	250	144.00
TPI-412 H	900	626	250	164.50
TPI-600	890	785	310	251.00
TPI-700	1000	785	310	293.00
TPI-800	1000	885	360	372.00
TPI-800 B	1000	960	400	424.00
TPI-900 B	1100	960	400	482.00
TPI-1000	1150	885	360	447.00
TPUI-387	640	622	355	100.00
TPUI-412	810	630	355	138.50
TPUI-412 H	900	630	355	171.50
TPUI-600	890	782	445	258.50
TPUI-700	1000	782	445	300.00

### Cylindrical Shape Crucibles

Size	Height (mm)	Outside Dia		Brimful Capacity (Ltr.)
		Top (mm)	Bottom (mm)	
CYI-329	530	330	327	27.75
CYI-430	430	310	305	18.00
CYI-425	425	315	300	19.00
CYI-450	450	330	330	27.00
CYI 400 X 700	700	400	400	58.50
CYI 400 X 670	670	400	400	53.00
CYI 400 X 640	640	400	400	53.00
CYI 400 X 540	540	400	400	44.00
CYI 400 X 500	500	400	400	41.00

#### Note

1. Dimensions shown are nominal and subject to manufacturing tolerances.
2. Our Crucibles are Tailor-made for Ferrous and Nonferrous applications. Please mention the name of metal and type of furnace in order to serve you better.
3. Working Capacities are approximate and calculated on Brass Sp. Gr. of 8.75 and Aluminium Sp. Gr. of 2.7 having 90% of Brimful Capacity.
4. Accessories like Stands, Muffle Rings and Covers also available.

### Accessories

Product / Size	Height (mm)	Outside Dia		Brimful Capacity (Ltr.)
		Top (mm)	Bottom (mm)	
Sleeve-I-100x200xD-80	200	100	100	
Sleeve-I-100x200xD-75	200	100	100	
Pencil Box-CI-260x190x230	260	190	230	5.99
ROD-I-54X1000	1000	54	54	

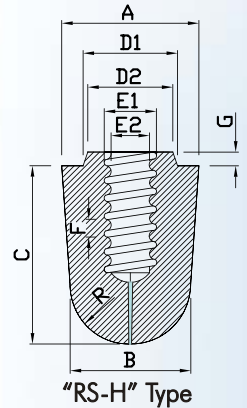
We make both type of Isostatic Crucibles in all sizes under two different series.

Shape	Isostatic Clay- Graphite Crucibles	Isostatic SiC Crucibles
A	AI	ACI
B	BPI	BPCI
C	CI	CCI
TP	TPI	TPCI

### Century - Stopper Head

#### Clay Graphite Stopper Head "RS-H" Type

TYPE	NOMINAL DIA	A	B	C	D1	D2	E1	E2	F	G	R	P
RS-22 H	90	89	86	114	57	56	28	21	13	10	43	6
RS-23 H	100	100	88	130	64	62	38	28	13	10	44	6
RS-24 H	115	115	102	142	70	68	38	28	12	10	51	6
RS-26 H	130	130	110	130	72	70	37	28	12	10	55	6



#### Application:

Century stopper head for controlling outflow of molten metal through the nozzle of bottom pour ladles.

#### Clay Graphite Stopper Head "CP" Type

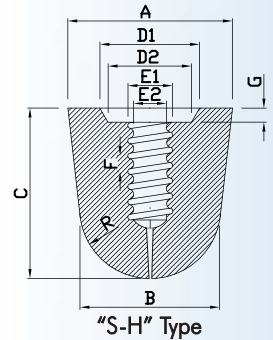
TYPE	NOMINAL DIA	A	B	C	D1	D2	E1	E2	F	G	R	P
CP-9	100	100	95	120	63	67	32	22	12	10	47.5	6
CP-10	125	125	115	140	75	81	38	28	12	14	57.5	6
CP-9 H	100	100	95	120	63	67	32	22	12	10	47.5	6
CP-10 H	125	125	115	140	75	81	38	28	12	14	57.5	6
M-12 H	160	160	155	180	106	100	55	43	16	18	77.5	7

#### Flow Control Mechanism:

Century stopper head work from inside of the ladle to open and close the passage through the pouring nozzle which extends vertically through the bottom of the ladle and to control the flow of the molten metal.

#### Clay Graphite Stopper Head "S-H" Type

TYPE	NOMINAL DIA	A	B	C	D1	D2	E1	E2	F	G	R	P
S-0 H	90	90	80	120	68	62	33.5	23.5	13	12	40	6
S-1 H	105	105	90	130	78	72	38.5	28.5	13	12	45	6
S-2 H	120	120	110	125	86	72	38.5	28.5	13	12	55	6
S-3 H	140	140	120	145	86	72	38.5	28.5	13	12	60	6
S-4/2 H	155	155	130	155	115	97	38.5	28.5	13	12	65	6
S-5 H	170	170	130	170	115	97	38.5	28.5	13	12	65	6



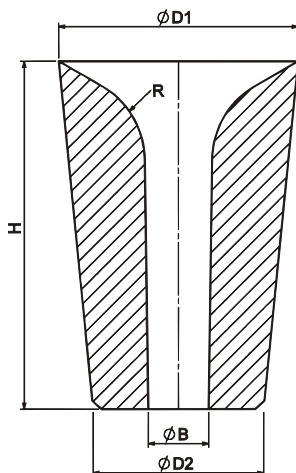
\* Sizes are available without hole also

\* All dimensions are in mm

#### Typical Properties

PHYSICAL PROPERTIES		CHEMICAL PROPERTIES	
Apparent Porosity	22 - 28 %	Carbon	14 - 16 %
Bulk Density	2.1 - 2.3 gm/cc.	Al <sub>2</sub> O <sub>3</sub>	52 - 54 %
C.C.S.	200-300 Kg/cm <sup>2</sup>	SiO <sub>2</sub>	25 - 27 %
P.C.E.	30-37 Orton Cone	Others	5 - 10 %

### Century - Foundry Nozzle



Our Foundry Nozzle are ideal for bottom pour ladle and auto pour system for providing good casting quality, higher productivity and safety during operation

Sr.	TOP (Ø D1)	BOD (Ø D2)	HEIGHT (H)	RADIUS (R)	BORE DIAMETER (Ø B)
NZF1	139	99	200	50	25, 30, 35, 40, 45, 50, 55
NZF1	135	95	200	50	25, 30, 35, 40, 45, 50, 55

#### Physical Properties

Apparent Porosity	18% - 22%
Bulk Density	2 - 2.3 gm/cc

#### Chemical Composition

Carbon	Not Present
Al <sub>2</sub> O <sub>3</sub>	55% - 60%
SiO <sub>2</sub>	30% - 40%
SiC	Not Present
Others	5% - 10%

Platinum - Crucible Stands



A-Type Stand

A-Type (Solid Cylindrical)



B-Type Stand

B-Type (Solid Taper)

Product Code	Height		Top Dia	
	Inch	mm	Inch	mm
S-508	5	127	8	203
S-608	6	152	8	203
S-708	7	178	8	203
S-808	8	203	8	203
S-908	9	229	8	203
S-1008	10	254	8	203
S-1108	11	279	8	203
S-1208	12	305	8	203
S-210	2	51	10	254
S-310	3	76	10	254
S-410	4	102	10	254
S-211	2	51	11	279
S-311	3	76	11	279
S-411	4	102	11	279
S-213	2	51	13	330
S-313	3	76	13	330
S-413	4	102	13	330
S-214	2	51	14	356
S-314	3	76	14	356
S-414	4	102	14	356
S-215	2	51	15	381
S-315	3	76	15	381
S-415	4	102	15	381
S-515	5	127	15	381
S-615	6	152	15	381
S-715	7	178	15	381
S-815	8	203	15	381
S-915	9	229	15	381
S-1015	10	254	15	381
S-1115	11	279	15	381
S-1215	12	305	15	381
S-217	2	51	17	432
S-317	3	76	17	432
S-417	4	102	17	432
S-517	5	127	17	432
S-617	6	152	17	432
S-717	7	178	17	432
S-817	8	203	17	432
S-917	9	229	17	432
S-1017	10	254	17	432

Product Code	Height		Top Dia	
	Inch	mm	Inch	mm
S-510	5	127	10	254
S-610	6	152	10	254
S-710	7	178	10	254
S-810	8	203	10	254
S-910	9	229	10	254
S-1010	10	254	10	254
S-1110	11	279	10	254
S-1210	12	305	10	254
S-511	5	127	11	279
S-611	6	152	11	279
S-711	7	178	11	279
S-811	8	203	11	279
S-911	9	229	11	279
S-1011	10	254	11	279
S-1111	11	279	11	279
S-1211	12	305	11	279
S-513	5	127	13	330
S-613	6	152	13	330
S-713	7	178	13	330
S-813	8	203	13	330
S-913	9	229	13	330
S-1013	10	254	13	330
S-1113	11	279	13	330
S-1213	12	305	13	330
S-514	5	127	14	356
S-614	6	152	14	356
S-714	7	178	14	356
S-814	8	203	14	356
S-914	9	229	14	356
S-1014	10	254	14	356
S-1114	11	279	14	356
S-1214	12	305	14	356
S-517	5	127	17	432
S-617	6	152	17	432
S-717	7	178	17	432
S-817	8	203	17	432
S-917	9	229	17	432
S-1017	10	254	17	432

## Application of Stand for different Crucibles

### For Indian Market

Size (A or B)	Application of Stand for different Crucibles
S-h08	AC-50, AC-52, AC-60, AC-70, AC-72, AC-75, AC-80, AC-86, AC-90, AC-100, AC-120 TPC-901, TPC-254, TPC-173, TPC-722, TPC-184
S-h10	AC-95, AC-98, AC-125, AC-130, AC-140, AC-150, AC-170, AC-180, AC-185, AC-190, AC-195, AC-200, AC-210, AC-215, AC-225, AC-230, AC-240, AC-250, AC-255, AC-280, BUC-35, BUC-50, BUC-60, TPC-389, TPC-904, TPC-5, TPC-6, TPC-400 S, TPC-400, TPC-723, TPC-196, TPC-600, TPC-843 S, TPC-843
S-h11	AC-325, AC-350, AC-350 T, AC-350 TT, AC-351 P, AC-355, AC-355 T, AC-355 TT, AC-356 P, AC-375, BUC-75, TPC-8, TPC-10, TPC-14, TPC-274, TPC-982, TPC-12
S-h13	AC-353, AC-380, AC-400, AC-400 T, AC-404, AC-404 H, AC-425, AC-500, AC-550, AC-600, AC-800, BUC-76, BUC-100, BUC-125, BUC-126, BUC-127, BUC-150, BUC-175, BUC-200, BUC-210, TPC-15, TPC-830, TPC-89 S, TPC-16, TPC-287
S-h14	AC-405, AC-510, AC-555, AC-610, AC-675, AC-675 H, AC-710, AC-710 H, AC-1000, AC-1200, AC-1500, AC-1800, BUC-130, BUC-215, BUC-250, BUC-300, BUC-350, BUC-400, BUC-500, BUC-550, BUC-600, BUC-700, TPC-89, TPC-387, TPC-412, TPC-412 H, TPC-587, TPC-587 H, TPC-650
S-h15	BUC-386, BUC-422, BUC-450, BUC-575, BUC-725, BUC-750, BUC-800, BUC-900, BUC-1000, BUC-1100, BUC-700 U, BUC-800 U, BUC-900 U, BUC-1000 U, BUC-1025 U, BUC-1200 U, TPC-800, TPC-1000, TPC-1100
S-h17	BUC-750 B, BUC-800 B, BUC-900 B, BUC-1000 B, BUC-1300 B, BUC-1350 B, TPC-800 B, TPC-900 B

### For Overseas Market

Size (A or B)	Application of Stand for different Crucibles
S-h08	ACX-65, ACX-70, ACX-75, ACX-78, ACX-80, ACX-90, ACX-100, ACX-105, ACX-110, ACX-132, ACX-140, TPCX-901, TPCX-254, TPCX-173, TPCX-722, TPCX-184
S-h10	ACX-120, ACX-130, ACX-145, ACX-150, ACX-175, ACX-180, ACX-185, ACX-190, ACX-195, ACX-200, ACX-250, ACX-275, ACX-277, ACX-280, ACX-285, ACX-300, ACX-305, ACX-325, ACX-340, ACX-345, BUCX-35, BUCX-50, BUCX-60, TPCX-389, TPCX-904, TPCX-6, TPCX-6 B, TPCX-400, TPCX-400 B, TPCX-723, TPCX-196, TPCX-600, TPCX-843, TPCX-843 B
S-h11	ACX-350, ACX-375, ACX-450, ACX-475, BUCX-75, TPCX-8, TPCX-10, TPCX-14, TPCX-274, TPCX-982, TPCX-12
S-h13	ACX-400, ACX-500, ACX-550, ACX-575, ACX-590, ACX-600, ACX-670, ACX-672, ACX-675, ACX-800, BUCX-100, BUCX-125, BUCX-150, BUCX-175, BUCX-200, BUCX-210, TPCX-15, TPCX-830, TPCX-89, TPCX-16, TPCX-287
S-h14	ACX-671, ACX-680, ACX-810, ACX-825, ACX-850, ACX-875, ACX-900, ACX-925, ACX-1000, ACX-1200, ACX-1500, ACX-1800, BUCX-215, BUCX-250, BUCX-300, BUCX-350, BUCX-400, BUCX-500, BUCX-550, BUCX-600, BUCX-700, TPCX-89 B, TPCX-387, TPCX-412, TPCX-412 H, TPCX-587, TPCX-587 H, TPCX-650
S-h15	BUCX-386, BUCX-422, BUCX-450, BUCX-575, BUCX-725, BUCX-750, BUCX-800, BUCX-900, BUCX-1000, BUCX-1100, BUCX-700 U, BUCX-800 U, BUCX-900 U, BUCX-1000 U, BUCX-1025 U, TPCX-800, TPCX-1000, TPCX-1100
S-h17	BUCX-750 B, BUCX-800 B, BUCX-900 B, BUCX1000 B, BUCX-1300 B, BUCX-1350 B, TPCX-800 B, TPCX-900 B

 height of stand in inches



Clay Graphite Stopper

Stoppers are manufactured and supplied to Rail Wheel factory, Bengaluru and Rail Wheel Plant, Bela (Indian Railway)



Ingate Sleeve

Ingate Sleeves are manufactured and supplied to Rail Wheel factory, Bengaluru and Rail Wheel Plant, Bela (Indian Railway)



Brazing Pan

Brazing Pan is a holding container of Molten Brass made up of Clay Graphite or Carbon Bonded Silicon Carbide generally used to fulfill the purpose of brazing the joints of cycle frame. By doing brazing bicycle becomes lighter and stronger as compared to other method of making bicycle



Muffle Ring

Muffle Rings are available in different heights for all type and size of crucibles. Muffle ring increases fuel efficiency by providing additional space for the heating charge



De-Gassing Rotor

It is used predominantly by Aluminium melters to homogenize, prevent settling and driving out impurities from an Aluminium melt. The rotor rotates at high speed while injecting pressurized gas through the head



Stopper Rod

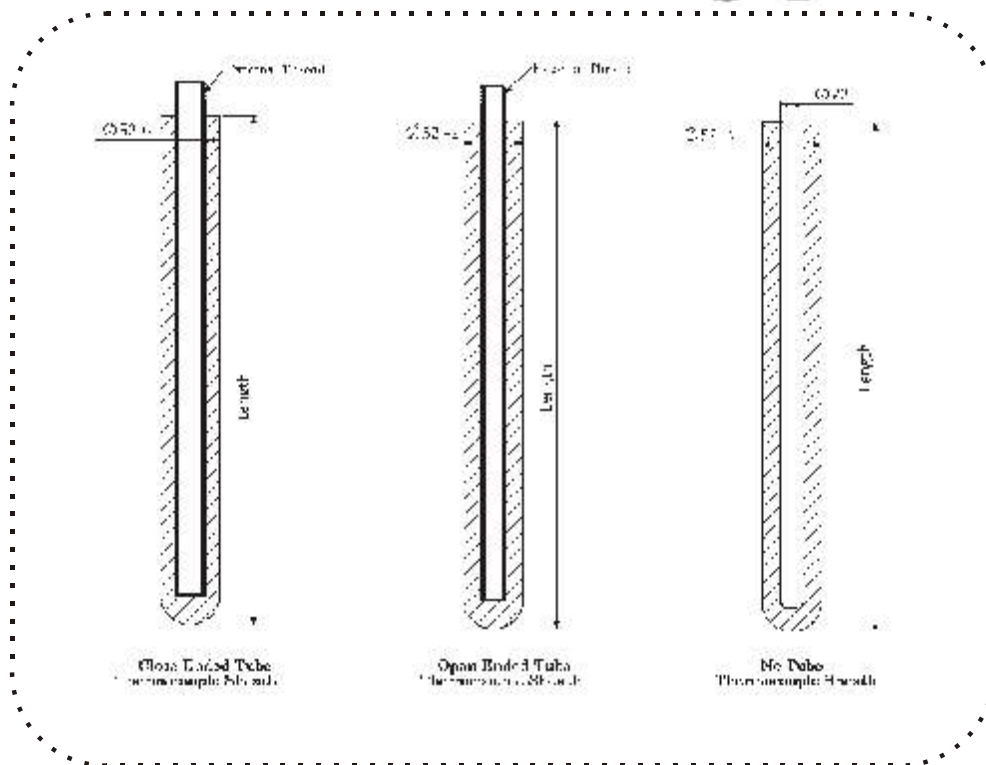
It is used for various applications as a valve mechanism for controlling the flow of steel through a nozzle. It has a highly engineered and accurate tip profile to facilitate users in regulating metal flow



Zircar manufacture a range of Isostatic silicon carbide advanced ceramic thermocouple protection sheaths for use in the aluminium and other non-ferrous melting and holding application. They are an advanced ceramic tube offering outstanding performance for temperature control in non ferrous foundries and smelters and are extremely cost effective compared to competitive materials, such as cast iron, Clay graphite, silicon nitride and alumina.

Zircar protection tube possess a unique combination of physical properties, such as high strength, toughness, excellent thermal shock resistance and resistance to corrosion, which make it the stand out material in this application.

Thermocouple Sheaths are available with either 1/2 BSP, 3/4 NPT pipe or without pipe with 25 mm hole.



### Sizes

Sr. No.	Drawing No.	Outside Diameter	Length	1/2" BSP & NPT	3/4" BSP & NPT	No Tube
1	TCS-5030	50 ±2	300	As specified	As specified	As specified
2	TCS-5045	50 ±2	450	As specified	As specified	As specified
3	TCS-5061	50 ±2	610	As specified	As specified	As specified
4	TCS-5071	50 ±2	710	As specified	As specified	As specified
5	TCS-5078	50 ±2	785	As specified	As specified	As specified
6	TCS-5095	50 ±2	950	As specified	As specified	As specified
7	TCS-50100	50 ±2	1000	As specified	As specified	As specified
8	TCS-50109	50 ±2	1090	As specified	As specified	As specified



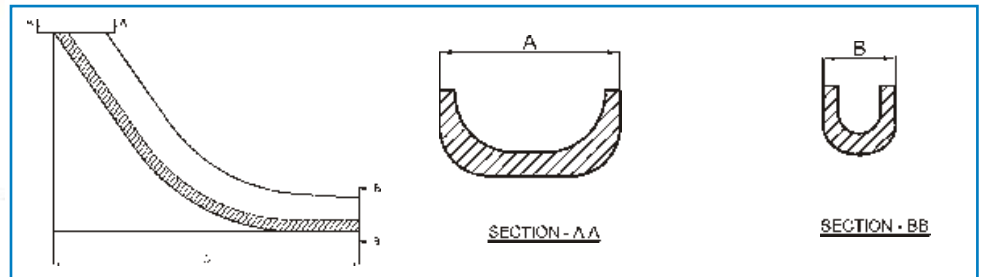
### Clay Graphite Liners

Zircar Liners are moulded in rigid forms in order to ensure dimensional repeatability and product consistency.

#### Application of Liners:

Liner is used for transferring molten ductile item to centrifugal machine for manufacturing spun pipe of various diameters.

#### Sizes of Converter Liner:



Model No.	Large Width (A)	Small Width (B)	Length (C)
Liner I-290	302	120	1054
Liner I-291	302	120	1100
Liner I-295	410	150	1054

### Clay Graphite Converter Segments

Zircar Converter Segment offers an economic alternative, Which are consumable for foundries converting cast iron to ductile iron. Ductile Iron is a high Carbon ferrous material with graphite in spheroidal form achieved through Magnesium treatment in a converter. To make SG Iron, MS scrap is melted in furnace and chemistry is suitably adjusted.

SG Iron possesses greater tensile strength, machinability than ordinary cast iron and also has considerable measure of ductility, resistance to impact.

#### Application of Segment:

Converter Segment is used for transforming Iron to ductile form.

#### Sizes of Converter Segment:

Sr. No.	Type	Curve Length (mm)	Height (mm)	Wall Thickness (mm)	Approximate Metal Capacity (Tonnage)	No. of Hole
1	Segment I-290	696	820	60	2 to 3	4
2	Segment I-290-1	696	820	60	2 to 3	3
3	Segment I-294	901	1020	70	4 to 5	4
4	Segment I-294-1	781	1020	70	4 to 5	4
5	Segment I-294-2	781	1020	70	4 to 5	5

# Silicon Carbide Crucibles

Platinum Brand Crucibles

# Century Clay Graphite Crucibles

Isostatic Advance Technology



## Zircar Refractories Ltd.

PRODUCT WITH A CUTTING EDGE

### Correspondence

402, 4th Floor, Campus Corner  
Nr. St. Xavier's College Cross Road,  
Navrangpura, Ahmedabad - 380009  
(Gujarat), INDIA.

Phone: + 91-79-26400538

E-mail (For Indian Market) : [dsales@zircarrefractories.com](mailto:dsales@zircarrefractories.com)  
E-mail (For Overseas Market): [esales@zircarrefractories.com](mailto:esales@zircarrefractories.com)

**Works** Mehsana, North Gujarat, INDIA

### Our Dealers Network in India:

Agra	Faridabad	Mathura
Ahmedabad	Hyderabad	Mirzapur
Aligarh	Jagadhari	Moradabad
Baroda	Jaipur	Mumbai
Bengaluru	Jalandhar	Pune
Bhiwadi	Jamnagar	Rajkot
Chennai	Jodhpur	Sangli
Coimbatore	Kanpur	Surendranagar
Delhi	Kolkata	

### Our Overseas supplies:

Argentina	Ghana	Nepal	Sri Lanka
Australia	Greece	Nigeria	Sudan
Bangladesh	Indonesia	Oman	Syria
Brazil	Iran	Peru	Taiwan
Bulgaria	Israel	Poland	Turkey
Canada	Italy	Qatar	UAE
China	Japan	Russia	Uganda
Czech Republic	Kenya	Saudi Arabia	USA
Egypt	Kuwait	Singapore	Vietnam
Eritrea	Lebanon	South Africa	
France	Malaysia	South Korea	
Georgia	Morocco	Spain	

### Our Branches:

#### Bengaluru

Phone : + 91-7574887688  
E-mail: [bangalore@zircarrefractories.com](mailto:bangalore@zircarrefractories.com)

#### Chennai

Phone: + 91-7574887685  
E-mail: [chennai@zircarrefractories.com](mailto:chennai@zircarrefractories.com)

#### Delhi

Phone: + 91-9711633901, + 91-9711633902  
E-mail: [delhi@zircarrefractories.com](mailto:delhi@zircarrefractories.com), [delhibdm@zircarrefractories.com](mailto:delhibdm@zircarrefractories.com)

#### Kolkata

Phone: + 91-7574887690  
E-mail: [kolkata@zircarrefractories.com](mailto:kolkata@zircarrefractories.com)

#### Mumbai

Phone: + 91-7574887683, + 91-7574887684  
E-mail: [mumbai@zircarrefractories.com](mailto:mumbai@zircarrefractories.com)

#### Pune

Phone: + 91-7574887681  
E-mail: [pune@zircarrefractories.com](mailto:pune@zircarrefractories.com)

#### Raipur

Phone: + 91-8238039019  
E-mail: [bhilai@zircarrefractories.com](mailto:bhilai@zircarrefractories.com)



Web: [www.zircarrefractories.com](http://www.zircarrefractories.com)

